



5560 INSTALLATION INSTRUCTIONS

Section	Parameter as shown on display	Values
Timers	Mains Transient Delay	0-10s (2s)
	Start Delay	0 -60m (5s)
	Transfer Delay	0-10s (0.75s)
	Return Delay	0 -60m (30s)
	Low Battery Delay	0-10m (1m)
	High Battery Delay	0-10m (1m)
Mains	Mains Under voltage Alarm	50V-360V ph-N (184V)
	Mains Over voltage Alarm	50V-360V ph-N (276V)
	Mains Under Frequency Alarm	0Hz -75Hz (45Hz)
	Mains Over Frequency Alarm	0Hz -75Hz (55Hz)
System	Plant Battery Under Volt Alarm	0-40V (10V)
	Plant Battery Over Volt Alarm	0-40V (30V)
Display	Language	ENGLISH , OTHERS
	Contrast	□ ■
Clock	Date and Time	dd mmm yyyy hh:mm
Misc.	Auto Scroll Time	0-10s (2.0s)

DISPLAY SETTINGS

- Press the buttons simultaneously to enter the editor.
- Press button to cycle round the available parameters.
- Press to change the visible parameter.
- To exit select **Abandon** or **Save changes and exit** and press either button.

Parameter	Values
Contrast	□ ■
Language	ENGLISH , OTHERS
Abandon changes & exit	
Save changes & exit	

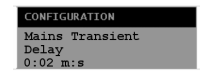
ACCESSING THE FRONT PANEL CONFIGURATION EDITOR

- Press the Stop/Reset and Info buttons simultaneously
- If a module security PIN has been set, the PIN number request is then shown (The first * is flashing) :
- Press + or – buttons to adjust it to the correct value. Press ✓ when the first digit is correctly entered. Repeat this process for the other digits of the PIN number.
- When ✓ is pressed after editing the final PIN digit, the PIN is checked for validity. If the number is not correct, the editor is automatically exited. To retry you must re-enter the editor as described above.
- If the PIN has been successfully entered (or the module PIN has not been enabled), CONFIGURATION is displayed :



EDITING A PARAMETER

- Enter the editor as described above.
- Press the + and – buttons to cycle to the parameter you wish to change.
- Press the ✓ button to enter edit mode. The parameter will flash to show edit mode is active (in this instance, "0:02 m:s" is flashing)
- Pressing the + and – buttons will adjust the parameter to the desired value. If you have mistakenly changed the value, press the Stop/Reset button once to return the parameter to the previously stored value and exit the edit mode back to parameter selection.
- For *date and time* editing only: press to select between day, month, year, hours and minutes.
- Press the ✓ button to 'save' the value. The value will stop flashing to confirm that it has been saved.
- To select another value to edit, press the + button. Continuing to press the + and – buttons will cycle through the adjustable parameters as shown overleaf.
- To exit the front panel configuration editor at any time, press the Stop/Reset button. Ensure you have saved any changes you have made by pressing the ✓ button first.



NOTE:- When the editor is visible, it is automatically exited after 5 minutes of inactivity to ensure security.

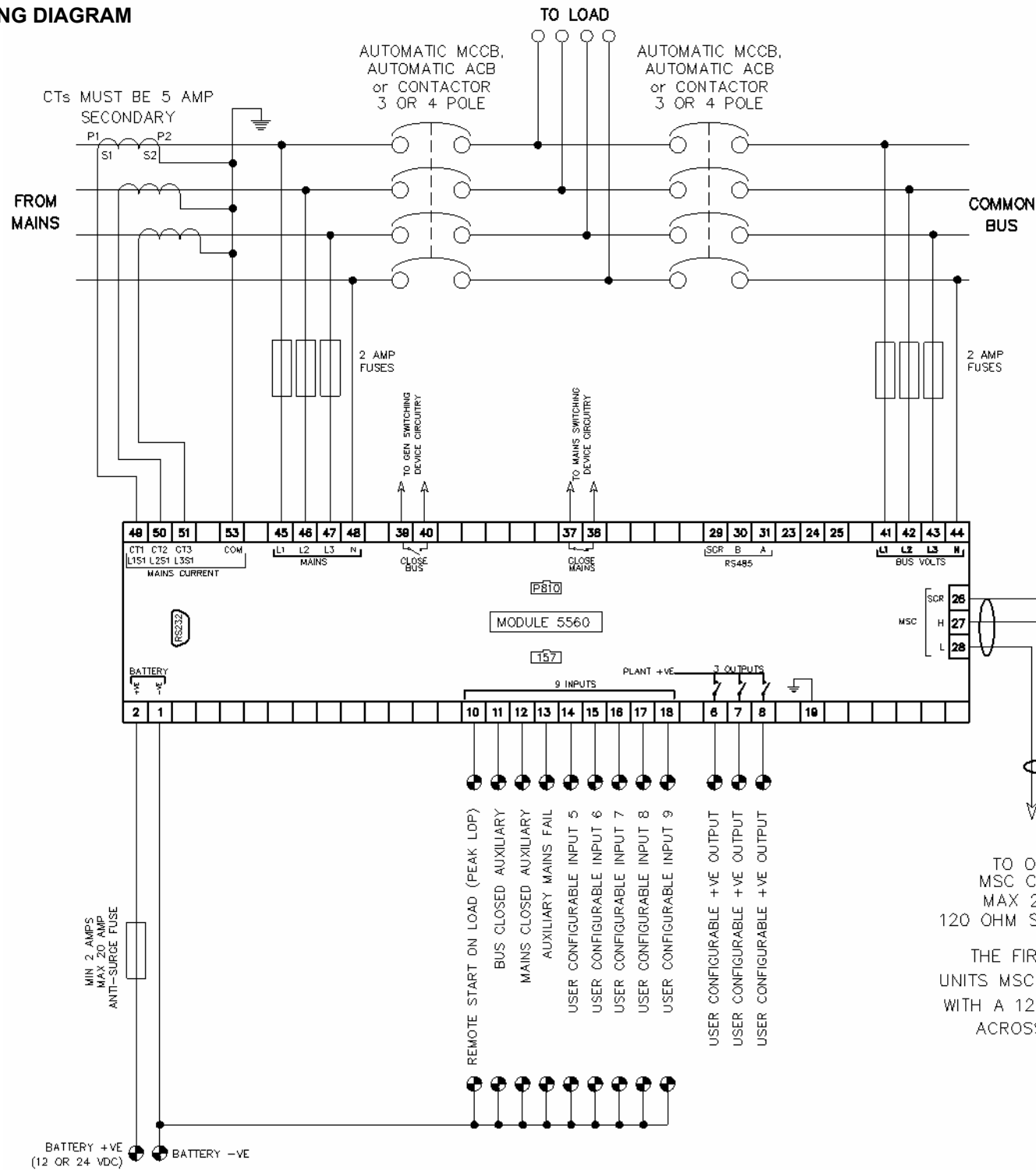
NOTE:- The PIN number is automatically reset when the editor is exited (manually or automatically) to ensure security.

NOTE:- More comprehensive module configuration is possible using the 5xxx series PC configuration software in conjunction with the P810 PC interface. Please contact us for further details.

NOTE:- Languages are subject to change as the modules are updated. Please contact us for the list of latest supported languages.

<p>Deep Sea Electronics Plc. Highfield House, Hunmanby Industrial Estate, North Yorkshire. YO14 0PH. ENGLAND Tel +44 (0)1723 890099. Fax +44 (0)1723 893303. LoCALL (uk only) Tel 0845 260 8900 LoCALL (uk only) Fax 0845 260 8901 Email: sales@deepseapl.com Web: www.deepseapl.com</p>	<p>Deep Sea Electronics Inc. 3230 Williams Avenue Rockford, IL 61101-2668. U.S.A. Tel +1 (815) 316-8706 Fax +1 (815) 316-8708 TOLL FREE (USA only) Tel.1 866 636 9703 Email: dsesales@deepseausa.com Web: www.deepseausa.com</p>
---	---

TYPICAL WIRING DIAGRAM



DIMENSIONS
 240mm x 172mm x 57mm
 (9.5" x 6.8" x 2.25")

PANEL CUTOUT :
 220mm x 160mm
 (8.7" x 6.3")

SCREW TERMINALS
 Suitable for : 0.6mm² - 1.3mm²
 (22 - 16 AWG)
 Tightening torque : 0.8Nm
 (7 lb / sq in)

TO OTHER 5510
 MSC CONNECTIONS
 MAX 250 METERS
 120 OHM SCREENED CABLE

THE FIRST AND LAST
 UNITS MSC MUST BE FITTED
 WITH A 120 OHM RESISTOR
 ACROSS MI AND MH